



# AGPROfessionals

DEVELOPERS OF AGRICULTURE

## County Road 90 Pierce, CO 22 acres +/-



**DESCRIPTION:** Nice, larger building site conveniently located just east of Pierce on paved CR 90. Great mountain views and easy access to Hwy 85. Pasture lease in place, possession cannot take place until October 15, 2021.

**LOCATION:** From Hwy 85 at Pierce go east on County Road 90 to CR 39 then south.

**MINERALS:** Seller shall retain all mineral rights

**ZONED:** Ag

**TAXES:** \$23/2020

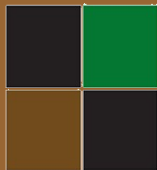
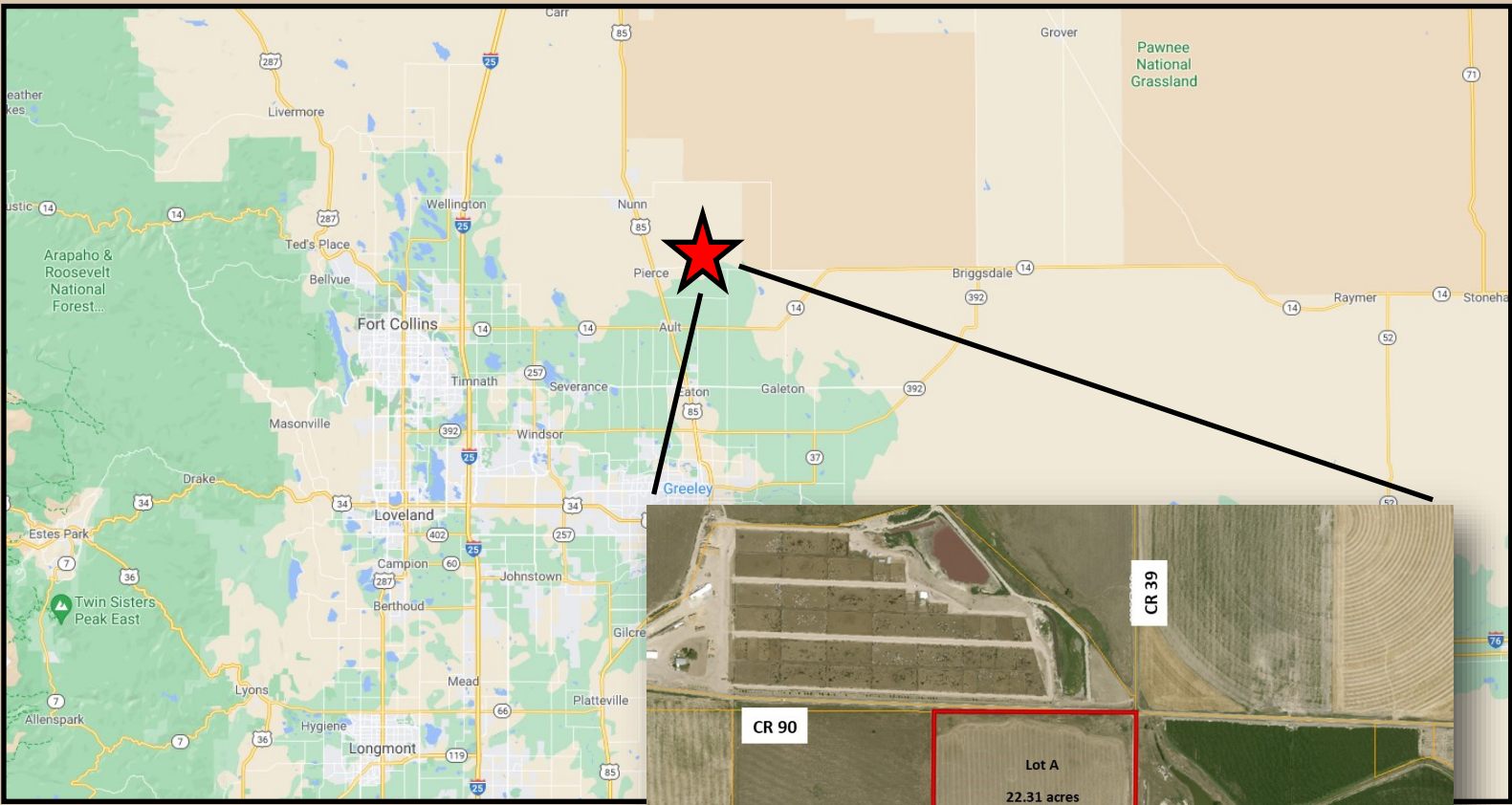
**\$275,000**



**RYAN  
HOSTETLER**  
ACCREDITED LAND CONSULTANT

**AGPROS.COM**  
3050 67th Avenue, Greeley, CO

303.883.7080 [Ryan@Agpros.com](mailto:Ryan@Agpros.com)



**AGPRO**fessionals  
DEVELOPERS OF AGRICULTURE